



MAHSA
UNIVERSITY

CLINICAL PRACTICES IN *Neurological Physiotherapy*



MAHSA University

MAHSA University is one of Malaysia's largest private medical and health university and was established in 2005. The University is located on a 48-acre land, just minutes from the Kuala Lumpur International Airport.

Characterised by a tradition of innovation, MAHSA constantly improves the quality of education and student experience, and strengthens the quality and impact of its research, to be well on its way towards its vision of becoming the Centre of Excellence in higher education in the region. Indeed, the various accreditations by Regulatory Boards, Professional Bodies and International Accreditation Standards further affirms the highest quality at MAHSA.

Today MAHSA University has students from 75 different countries and not just from the region of Asia, but as far as Australia, United Kingdom, Canada and the United States of America.

Benefits

Enhanced Employability

Employers value students who are flexible, adaptive and equipped with cross-cultural skills. Students who have participated in mobility programs are often deemed to be more matured.

Soft Skills

Mobility programs often increase students' interpersonal skills, communication skills as well as adaptation skills.

Life Experience

Experiences and outdoor learning are two significant features of the mobility program. Studying, learning and living abroad exposes students to other cultures in a priceless way.

Building Network

Mobility programs can open doors of opportunity for students in the global arena. Students build international connections and rapport through networking with students and potential employers through different mobility program.

MAHSA's Mobility Programs



Learn!



14 days!

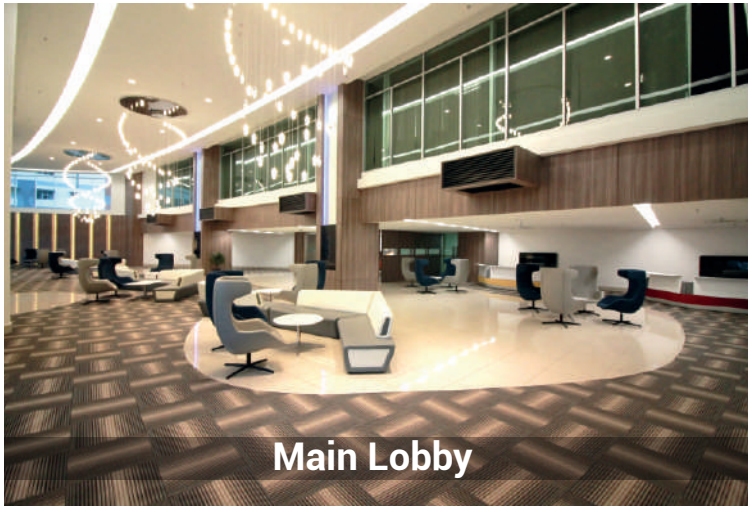


Celebrate
Friendships!



Discover
Something
New!

Expand your horizons and join MAHSA's Mobility Programme as part of your educational experience. Discover new cultures, make new friends from all over the world and gain a competitive edge by being a global citizen.



Main Lobby

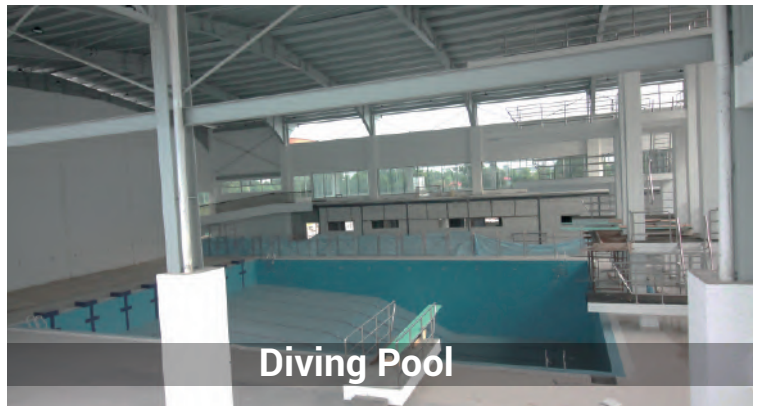


Auditorium

STUDENT - CENTERED FACILITIES



Library



Diving Pool



Science Labs



Football Field

PROGRAMME AGENDA

	CONTENT	
DAY	AM	PM
DAY 1	Arrival at Kuala Lumpur International Airport Check in accommodation	
DAY 2	Meet & Greet with Dean & Head of School Ice-breaking and Campus Tour	Observation at Anatomy suite Interaction with MAHSA Association of Physiotherapy Students (MAPS)
DAY 3	Physiotherapy Facilities Tour Demonstration –Gait Lab, Isokinetic machine	Physiotherapy Practical Sessions with MAHSA Student Physiotherapy Assessments Refreshed
DAY 4	MAHSA Physiotherapy Clinic @JUC	
DAY 5	Stroke Rehabilitation Centre Visit	
DAY 6	KKM Hospital Visit	
DAY 7	KL City Tour	
DAY 8	Free and Easy with 'Adopted Host Student'	
DAY 9	Physiotherapy Practical Sessions with Clinical Instructors	
DAY 10	Physiotherapy Master Class	
DAY 11	Musculoskeletal and Sport Centre Visit	
DAY 12	Tips on presentations Q & A on Reflection and Presentation	Student Preparation Time on Presentation
DAY 13	Reflection and Presentation Certificate Presentation	Farewell Party
DAY 14	Airport Transfer	



ACCOMMODATION

Twin Sharing with aircondition - USD 410
Quad Sharing with fan - USD 250

Including:

- Airport pick up and send - off
- Accommodation
- Training documents and relevant handouts
- Commuting fee
- Welcome & Farewell party

Excluding:

- Visa fee
- Two-way airfares
- Personal expenses
(phone call, laundry, postage & etc.)
- Meals

VISA

MAHSA University supports relevant documents for student to obtain a VISA at the Embassy or Consulate General in their home country. Students will bear VISA application cost.

INFORMATION

FACILITIES & SERVICES



24-Hour
Security with
CCTV



Free Wifi
Access



Launderette



24-Hour Warden
on Standby



Vending
Machines



Access Card
System

HOW TO APPLY

Applicants to apply via the following online application form:
<https://forms.gle/ZXjU83Q5YWcmRdaWA>



For more information, please write to us:
Email: studentexp@mahsa.edu.my

MAHSA UNIVERSITY

Jalan SP2, Bandar Saujana Putra, 42610 Jenjarom, Selangor, Malaysia

Contact us: +603-5102 2200 | 1800 88 0300 | studentexp@mahsa.edu.my | www.mahsa.edu.my



MAHSA University